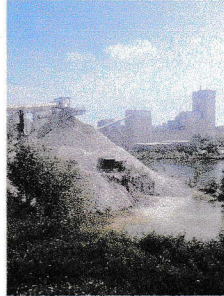
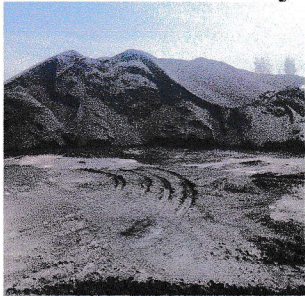


### Product Line Summary



- T-268 is an additive that increases the viscosity of calcium and magnesium chloride to maintain the product at the surface where it's most effective for reducing dust
- T-268 treated product will reduce leaching of the chlorides but will also dry at the surface making it less prone to washing away after a rain
- T-268 is 100% organic that is non-toxic and safe for the environment

### PRODUCT CHARACTERISTICS

T-268 is a highly concentrated, organic based erosion control product that is non-toxic and safe for the environment. T-268 is ideal for controlling wind and rain erosion on inventory stockpiles exposed to the outdoor elements. It is also extremely effective in controlling collective dust, meaning situations where dusty inventory is being constantly moved by conveyors, loaders, etc. T-268 also has the advantages of being one of the most cost effective solutions on the market, while at the same time being extremely effective.

### TYPICAL ANALYSIS

#### Physical Properties

Appearance	White, milky solution	
Odor	None	
Bulk Density, gm/litre	1150	
lb/US gal	9.58	

#### Chemical Properties

	Limit	Typical
Proprietary formulation, %	26.0 – 28.0	27.0
Magnesium and alkali salts, %	5.0 Max.	2.5
Arsenic (as As), ppm	3 Max.	<0.1
Iron (as Fe), ppm	5 Max.	<1.0
Heavy Metals (as Pb), ppm	20 Max.	<2
Fluoride (as F), ppm	40 Max.	<2
Lead, (as Pb), ppm	5 Max.	<0.1
Alkalinity (as Ca(OH) <sub>2</sub> ), %	0.2 Max.	0.03

### APPLICATIONS

T-268 is extremely effective for wind and rain erosion control at mining operations, inventory stockpiles, continuous movement and /or the disturbance of erosion prone products. It is also useful for erosion control on Tailing Ponds.

### AVAILABILITY

T-268 is available directly from Andemar in tank truck shipments or convenient 1000 l totes.

### PRODUCT SAFETY INFORMATION

As with any chemical, T-268 requires care in handling. Anyone responsible for the procurement, use or disposal of this product should familiarize himself and those handling it with the appropriate safety and handling precautions. This information is available in Material Safety Data Sheets, which may be obtained from our Customer Service sales group.

In the event of an emergency with this product, call our 24-hour emergency number: (519) 982-4758.

